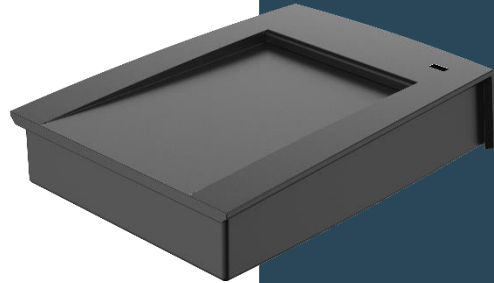


IC Card Issuer

LXKCI202-USB



Key Features

- Supports Mifare card (IC Card)
- Built-in audible beeper
- Plug & Play, connection with PC through USB port

Specification

LXKCI202-USB

Basic	
Product Type	Card issuer
Status Indicator Light	1 (Green: normal; red: abnormal)
Buzzer	Yes
Casing Material	PC + ABS
Supported Card Type	IC Card (Mifare card)
Prompt of Succeeded in Issuing Card	Card issuer is solid green and buzzer sounds for 1 s
Prompt of Failed to Issue Card	Card issuer flashes red and buzzer sounds 3 times
Card Reading Frequency	13.56 MHz
Card Issuing Distance	1.18"–1.97"(3 cm–5 cm ())
General	
Power Supply	DC 5 V, 0.5 A
Power Consumption	Standby Mode: ≤ 1.0 W; Working Mode: ≤ 1.7 W
Product Dimensions	4.13" \times 2.95" \times 0.79" (105 mm \times 75 mm \times 20 mm)
Packaging Dimensions	7.56" \times 5.20" \times 2.13" (192 mm \times 132 mm \times 54 mm)
Operating Temperature	–22 °F to +140 °F (–30 °C to +60 °C)
Operating Humidity	5%–95% (RH), non-condensing
Operating Environment	Indoor
Gross Weight	0.18 kg (0.40 lb)
Certifications	FCC;FCC ID

Dimensions (mm[inch])

LXKCI202-USB

mm[inch]

